

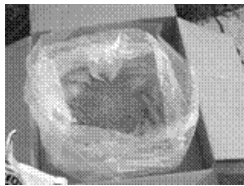
## **INSTRUCTIONS FOR THE DISPOSAL OF WATER BASED LATEX PAINT**

**Latex paint is non-hazardous and should NOT BE BROUGHT to our Household Special Waste Collections.** It can be disposed of in the regular trash, provided it is first dried out.

**Following these simple steps, you can dispose of latex paint in the trash, year round.**



1. Check the label for an indication that the paint is latex or cleans up with “soap and water”.
2. Gather the following materials: cardboard box; strong plastic trash bag; kitty litter or sand.



3. Place a cardboard box on the ground. Place a strong plastic bag inside the box, fitting the open ends of the bag over the sides of the box. Place sand or kitty litter into the plastic bag.



4. Open the paint can and pour the paint into the plastic bag with the kitty litter/sand, adding more kitty litter or sand, if needed. Mix together with a stick or branch.
5. Keep the plastic bag open. Wait for the kitty litter/sand to absorb the paint. This may take from a few hours to a few days depending on and the amount of paint.



6. When the paint is dry, pull the ends of the plastic trash bag together and secure tightly. Discard the bag into the trash.
7. Allow the residue inside the empty paint can to harden and then dispose of the can in the regular trash with the lid off.